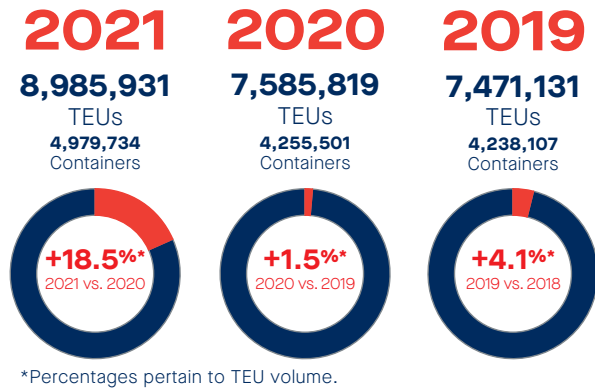


Record Cargo Volumes

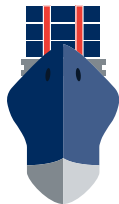


The Port of New York & New Jersey is the largest container port on the U.S. East Coast and third largest in the nation.

Auto & Bulk Vessel Calls in 2021

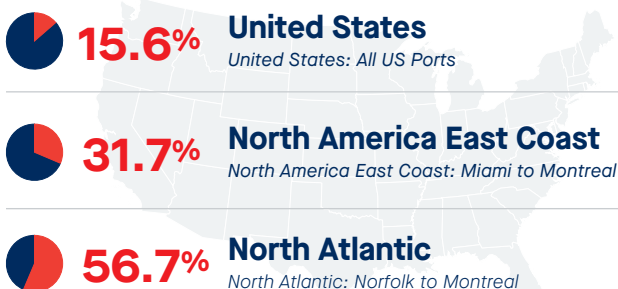


Auto
472 Calls



Bulk
229 Calls

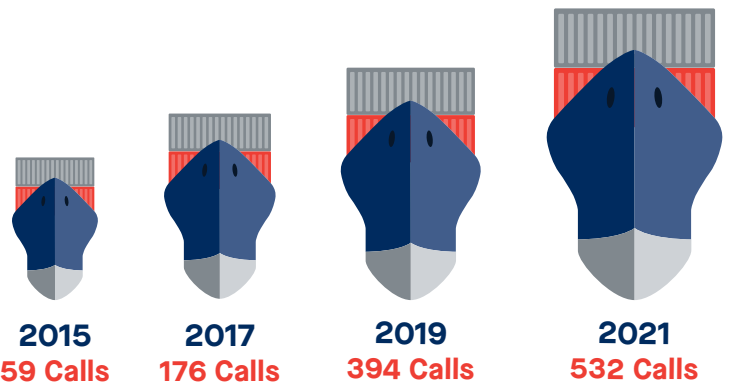
The Port of NY & NJ Market Share (by TEU Volume)



2021 U.S. Port Volume Rankings (TEUs)

| RANK | PORT | VOLUME |
|----------|---------------------------------|------------------|
| 1 | Los Angeles | 10,677,609 |
| 2 | Long Beach | 9,384,368 |
| 3 | New York and New Jersey | 8,985,931 |
| 4 | Savannah | 5,613,163 |
| 5 | Seattle Tacoma Seaport Alliance | 3,736,206 |
| 6 | Hampton Roads | 3,522,835 |
| 7 | Houston | 3,453,266 |
| 8 | Charleston | 2,751,449 |
| 9 | Oakland | 2,448,244 |
| 10 | Jacksonville | 1,407,310 |

Vessel Calls with Capacity above 9,000 TEUs



Food Imports (TEUs)

| FOOD IMPORTS | 2021 | 2020 |
|--|----------------|----------------|
| Beverages, Spirits And Vinegar | 234,430 | 222,150 |
| Prep Vegetables, Fruit, Nuts | 111,315 | 104,417 |
| Prep Cereal, Flour, Starch Or Milk | 87,315 | 85,743 |
| Fish & Crustaceans | 60,028 | 49,230 |
| Miscellaneous Edible Preparations | 52,917 | 47,059 |
| Edible Fruit And Nuts | 49,840 | 47,203 |
| Coffee, Tea, Mate And Spices | 48,099 | 42,355 |
| Edible Vegetables | 37,148 | 36,947 |
| Milling Products: Malt, Starch, Inulin, etc. | 29,023 | 26,148 |
| Dairy Products; Birds Eggs; Honey | 26,417 | 25,754 |
| Edible Preps of Meat, Fish, Crustaceans | 23,966 | 18,323 |
| Meat And Edible Meat Offal | 6,011 | 4,868 |
| TOTAL | 766,509 | 710,197 |

The Port of New York & New Jersey moved approximately \$232 billion worth of goods in 2021.

Container Volume (TEUs)

| IMPORTS | | | | EXPORTS | | | |
|--------------------------------|---------|---------|--|--------------------------------------|---------|---------|--|
| COMMODITY | 2021 | 2020 | | COMMODITY | 2021 | 2020 | |
| Furniture | 569,559 | 481,644 | | Vehicles and Parts etc | 217,515 | 170,056 | |
| Appliances, Machinery & Parts | 303,026 | 299,963 | | Wood Pulp (Waste & Scrap) | 192,044 | 200,107 | |
| Plastics and Articles Thereof | 298,129 | 267,060 | | Plastics and Articles Thereof | 87,870 | 91,884 | |
| Beverages, Spirits and Vinegar | 235,005 | 222,150 | | Wood and Articles of Wood | 67,910 | 74,370 | |
| Electric Machinery & Parts | 181,283 | 163,514 | | Appliances, Machinery & Parts | 64,413 | 63,936 | |
| Articles of Iron or Steel | 147,814 | 122,606 | | Oil Seeds, Grain, Seed, Fruit, Plant | 33,076 | 44,376 | |
| Rubber and Articles Thereof | 145,277 | 114,376 | | Special Classification Provisions | 31,745 | 30,717 | |
| Apparel and Accessories | 141,963 | 100,759 | | Aluminum and Articles Thereof | 31,286 | 32,485 | |
| Vehicles & Parts | 131,521 | 105,582 | | Food Industry Residues & Waste | 28,645 | 37,281 | |
| Toys, Games & Sport Equipment | 129,377 | 101,425 | | Electric Machinery & Parts | 26,821 | 23,343 | |

| TOP COUNTRIES FOR IMPORTS | | | | TOP 10 CONSIGNEE STATES FOR PONYNJ IMPORTS | | | |
|---------------------------|-----------|-----------|--|--|---------|---------|--|
| COUNTRY OF ORIGIN | 2021 | 2020 | | CONSIGNEE STATE | 2021 | 2020 | |
| China | 1,290,222 | 1,035,306 | | New Jersey | 689,375 | 585,799 | |
| India | 386,266 | 272,202 | | New York | 638,815 | 521,285 | |
| Vietnam | 311,059 | 253,040 | | California | 259,956 | 223,836 | |
| Italy | 236,868 | 219,746 | | Pennsylvania | 226,319 | 204,533 | |
| Germany | 184,035 | 190,992 | | Illinois | 176,835 | 147,076 | |
| Thailand | 139,353 | 109,188 | | Massachusetts | 115,928 | 69,458 | |
| Turkey | 138,937 | 118,902 | | Ohio | 102,688 | 99,197 | |
| France | 128,131 | 105,805 | | Connecticut | 92,061 | 88,989 | |
| South Korea | 119,401 | 105,482 | | Florida | 84,502 | 67,117 | |
| Hong Kong | 105,846 | 81,603 | | Texas | 77,526 | 65,602 | |

Top 5 Bulk Commodities (Metric Tons)

| RANK | COMMODITY | 2021 | 2020 |
|------|---------------|-----------|---------|
| 1 | Salt | 1,309,665 | 661,485 |
| 2 | Cement | 756,274 | 703,485 |
| 3 | Scrap | 333,850 | 276,220 |
| 4 | Orange Juice | 240,033 | 288,587 |
| 5 | Belgium Block | 70,125 | 94,131 |

Total Bulk Cargo (Metric Tons)



4,036,341

Top 10 Rail Destinations

| | |
|-------------|--------------|
| Chicago | Indianapolis |
| Columbus | St Louis |
| Detroit | Cincinnati |
| Cleveland | Pittsburgh |
| Kansas City | Worcester |

Rail Lifts

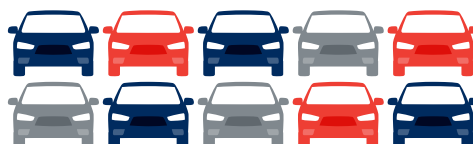


709,094

The Port of New York & New Jersey is the 23rd largest container port in the world.

Autos

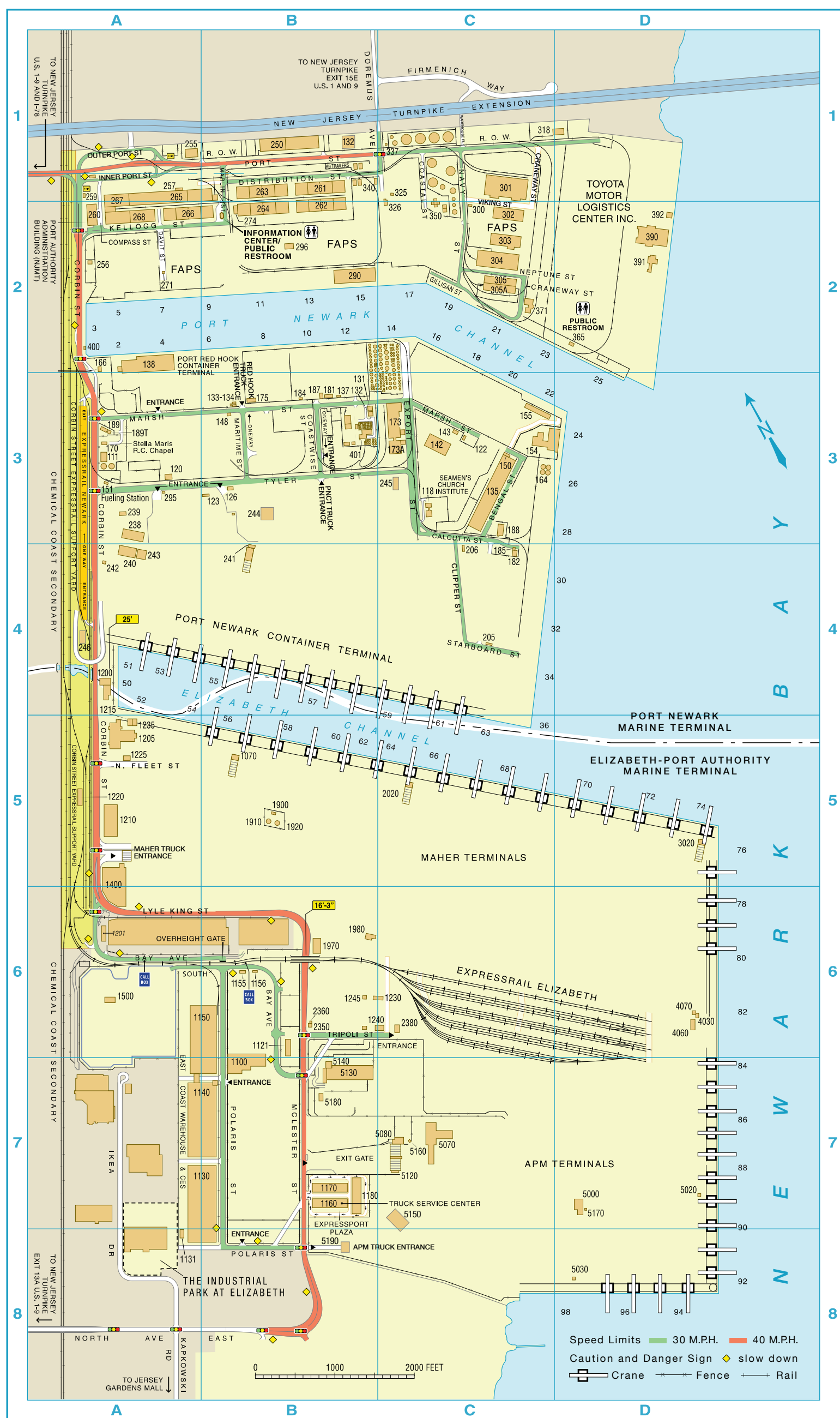
458,026



Autos by Rail



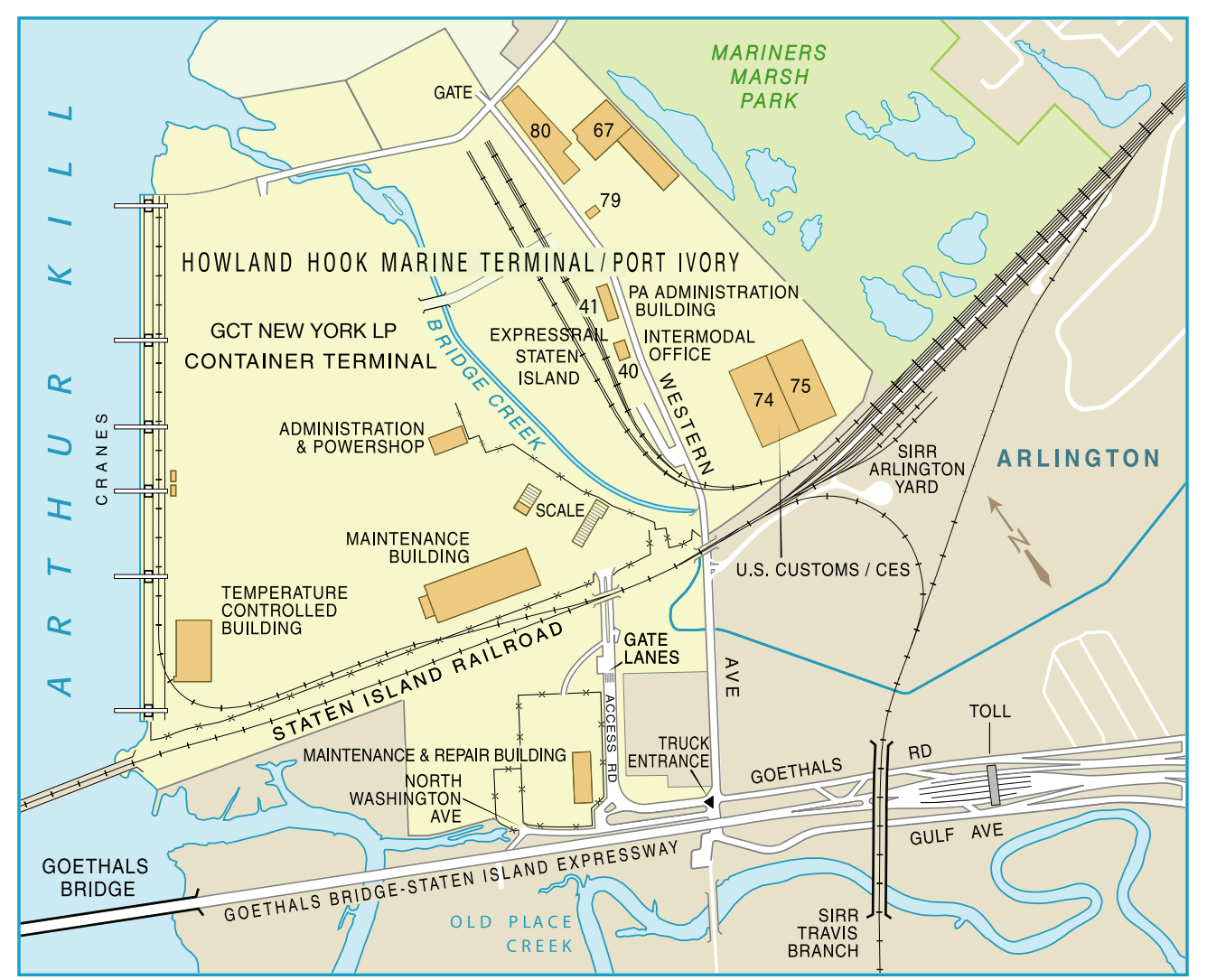
55,303



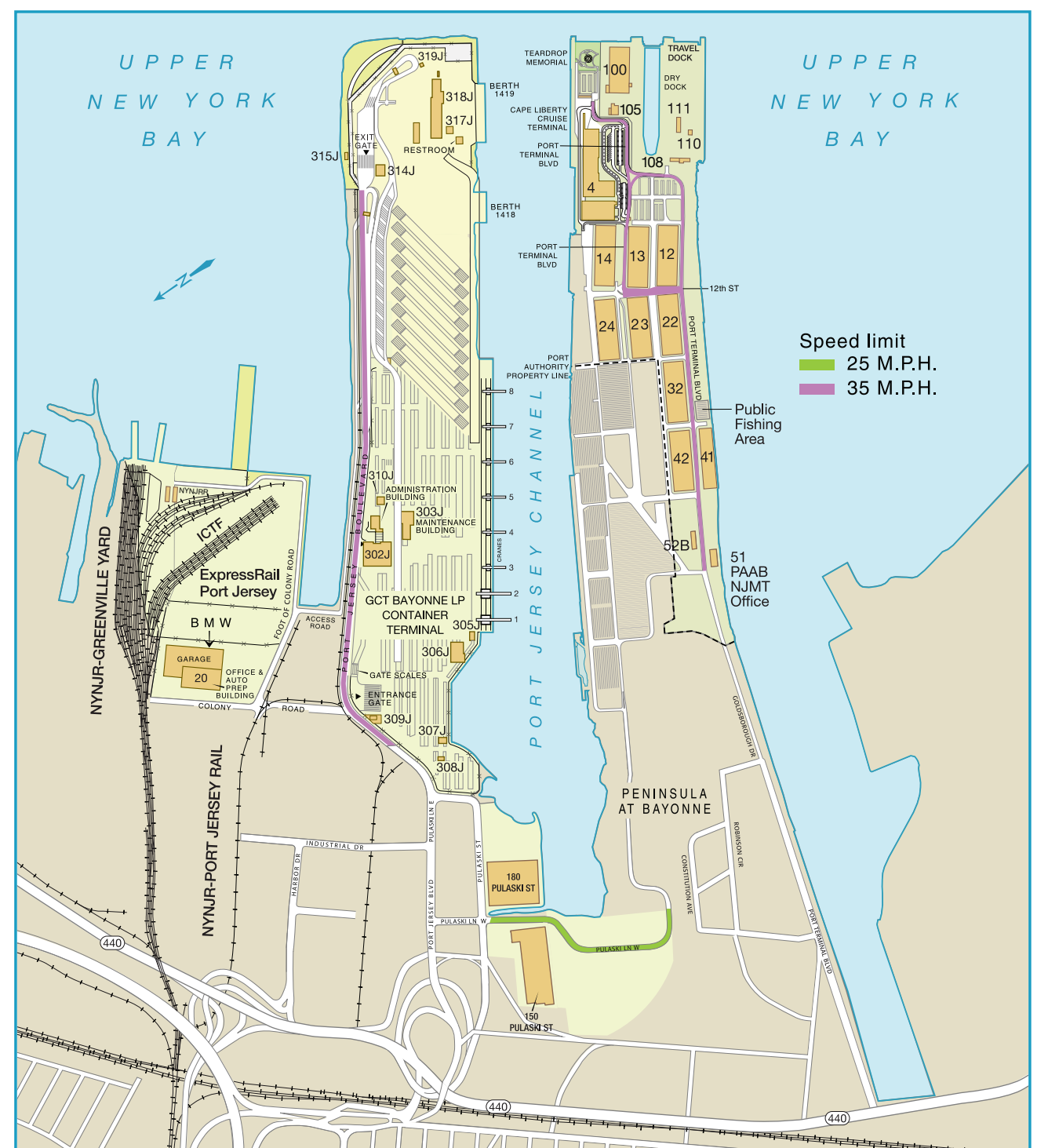
PORT NEWARK MARINE TERMINAL/ELIZABETH-PORT AUTHORITY MARINE TERMINAL

PORT NEWARK/ELIZABETH BUILDING LOCATION CHART

| BLDG # | KEY | BLDG # | KEY |
|---------|---------|--------|-----------|
| 111 | 3-A | 340 | 1-B |
| 118 | 3-C | 350 | 2-C |
| 120 | 3-A | 365 | 2-D |
| 122 | 3-C | 371 | 2-C |
| 123 | 3-AB | 390 | 2-D |
| 126 | 3-B | 391 | 2-D |
| 131 | 3-B | 392 | 2-D |
| 132 | 3-B | 400 | 2-A |
| 133-134 | 3-B | 401 | 3-B |
| 135 | 3-C | 407 | 5-B |
| 137 | 3-B | 1100 | 7-B |
| 138 | 2-A | 1121 | 6-B |
| 142 | 3-C | 1130 | 7-AB/8-AB |
| 143 | 3-C | 1131 | 8-A |
| 147 | 3-A | 1140 | 7-A |
| 148 | 3-B | 1150 | 6-AB/7-AB |
| 150 | 3-C | 1155 | 6-B |
| 151 | 3-A | 1156 | 6-B |
| 154 | 3-C | 1160 | 7-B |
| 155 | 3-C | 1170 | 7-B |
| 164 | 3-C | 1180 | 7-B |
| 166 | 2-A | 1200 | 4-A |
| 170 | 3-A | 1205 | 5-A |
| 173 | 3-C | 1210 | 5-A |
| 175 | 3-B | 1215 | 5-A |
| 178 | 3-C | 1220 | 5-A |
| 181 | 3-B | 1225 | 5-A |
| 182 | 4-C | 1230 | 6-BC |
| 184 | 3-B | 1235 | 5-A |
| 185 | 4-C | 1240 | 6-BC |
| 187 | 3-B | 1245 | 6-B |
| 188 | 3-C | 1400 | 5-A/6-A |
| 189 | 3-A | 1500 | 6-A |
| 205 | 4-C | 1510 | 6-A |
| 206 | 4-C | 1900 | 5-B |
| 238 | 3-A | 1910 | 5-B |
| 239 | 3-A | 1920 | 5-B |
| 240 | 4-A | 1970 | 6-B |
| 241 | 4-B | 1980 | 6-B |
| 242 | 4-A | 2020 | 5-C |
| 246 | 4-A | 2350 | 6-B |
| 250 | 1-B | 2360 | 6-B |
| 255 | 1-A | 2380 | 6-C |
| 256 | 2-A | 3020 | 5-D |
| 257 | 1-A | 4030 | 6-D |
| 259 | 1-A | 4060 | 6-D |
| 260 | 2-A | 4070 | 6-D |
| 261 | 1-B | 5000 | 7-D |
| 262 | 2-B | 5020 | 7-D |
| 263 | 1-B | 5030 | 8-D |
| 264 | 2-B | 5070 | 7-C |
| 265 | 1-A | 5080 | 7-C |
| 266 | 2-A | 5090 | 6-B/7-B |
| 267 | 1-A/2-A | 5110 | 7-C |
| 268 | 2-A | 5120 | 7-C |
| 270 | 1-B | 5130 | 7-B |
| 271 | 2-A | 5140 | 7-B |
| 274 | 2-B | 5150 | 7-C |
| 290 | 2-B | 5160 | 7-C |
| 292 | 2-B | 5170 | 7-D |
| 295 | 3-A | 5180 | 7-B |
| 296 | 2-B | 5190 | 8-B |
| 300 | 2-C | | |
| 301 | 1-C | | |
| 302 | 2-C | | |
| 303 | 2-C | | |
| 304 | 2-C | | |
| 305 | 2-C | | |
| 305A | 2-C | | |
| 318 | 1-CD | | |
| 325 | 1-C | | |
| 326 | 10/2C | | |
| 337 | 1-C | | |



HOWLAND HOOK MARINE TERMINAL/PORT IVORY



PORT JERSEY-PORT AUTHORITY MARINE TERMINAL



BROOKLYN-PORT AUTHORITY MARINE TERMINAL



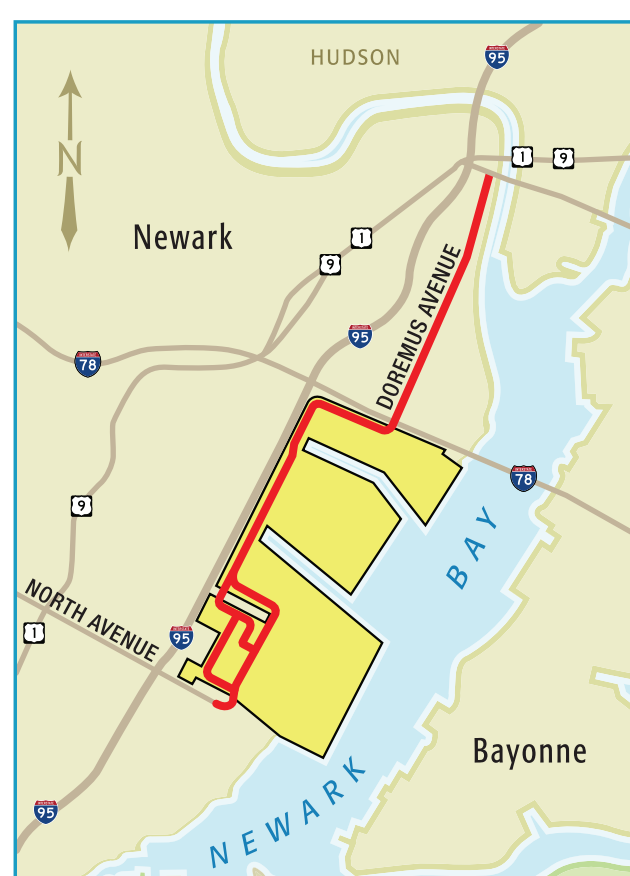
EXPRESSRAIL SYSTEM



PORT AUTHORITY FACILITIES LOCATOR

The Port is a vital gateway for global trade, providing industry partners with an expansive network of world-class terminals, on- and near-dock intermodal rail systems, and nearby highways, distribution centers, and warehouses to keep global trade moving.

The roadways highlighted on the map — Port Newark-Elizabeth Marine Terminal Highways and the Doremus Avenue Overweight Route — allow the movement of marine containerized cargo to a maximum gross vehicle weight (MGVW) limit of 128,000 pounds — provided that the movement does not exceed equipment manufacturers' limits for safe working loads.



THE PORT NEWARK/ELIZABETH AND DOREMUS AVENUE OVERWEIGHT CORRIDOR

Port of New York & New Jersey

As a valued customer of the Port of New York and New Jersey, we offer you this courtesy map. The Port of New York and New Jersey consists of six terminal operators including APM Terminals, GCT Bayonne, GCT New York, Maher Terminals, Port Newark Container Terminal, and Red Hook Container Terminal. Our network of partners is served by all of the major ocean carriers and constitutes one of the most productive, high-volume operations in the world. When you ship through the Port of New York and New Jersey, you benefit from competitive pricing and a wide range of cargo movement solutions. Call us today.

PORT AUTHORITY OFFICES

Headquarters
4 World Trade Center
150 Greenwich Street, 17th Floor
New York, NY 10007
T: 1-888-PORT-NY/NJ
F: (212) 435-4204

New York Marine Terminals
90 Columbia Street
Brooklyn, NY 11201
T: (718) 330-2950
F: (718) 855-3618

New Jersey Marine Terminals
200 Kelllogg Street
Port Newark, NJ 07114
T: (973) 589-7100
F: (973) 589-5018

TERMINAL OPERATORS

APM Terminals
5080 Mc Lester Street
Elizabeth, NJ 07207
T: (908) 558-6000
F: (908) 558-6481
www.apmterminals.com

GCT Bayonne
302 Port Jersey Boulevard
Jersey City, NJ 07305
T: (201) 706-4000
F: (201) 451-5088
www.globalterminalsbayonne.com

GCT New York
300 Western Avenue
Staten Island, NY 10303
T: (718) 273-7000 / (718) 588-1700
F: (718) 815-8270
www.globalterminalsnewyork.com

Maher Terminals
1210 Corbin Street
Elizabeth, NJ 07201
T: (908) 527-9200
F: (908) 436-4804
www.maherterminals.com

Port Newark Container Terminals
241 Calcutta Street
Port Newark, NJ 07114
T: (973) 522-2200
F: (973) 465-8827
www.pcnt.net

Red Hook Container Terminal
70 Hamilton Avenue
Brooklyn, NY 11231
T: (718) 643-0777
F: (718) 643-7201
www.redhookterminal.com

Red Hook Container Terminal (Newark Facility)
138 March Street
Port Newark, NJ 07114
T: (973) 522-0999
F: (973) 522-1360
www.redhookterminal.com

Facilities Map →

For more information about our port improvements, visit our website at portnynj.com or call us at 1-888-PORT-NY/NJ.

The Port is a facility of the Port Authority of NY & NJ

