

December 2022 Traffic Report

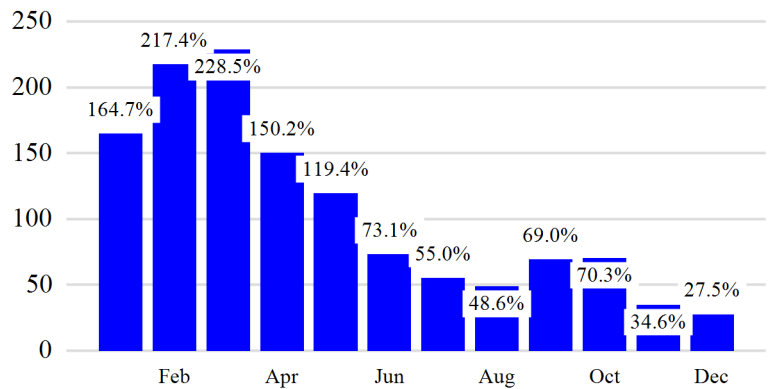
AVIATION DEPARTMENT (Data As Of 2/2/2023 3:31:05 PM)

Revenue Passengers

	Curr Month	% Change
	4,868,087	27.5% ▲
Domestic	2,377,173	11.4%
International	2,490,914	48.0%
Non-Revenue	126,427	11.0%

Load Factors	Curr Month	Avg Load Factor
Domestic	81.3%	81.4% Avg Load Factor
International	81.4%	

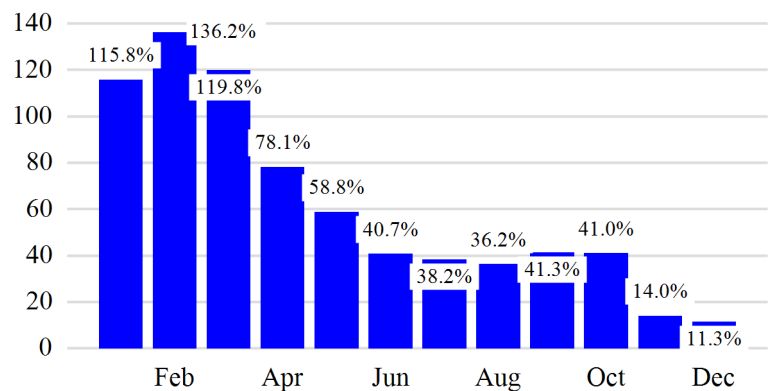
Year over Year % Change in Revenue Passengers - 12 Months



Total Flights

	Curr Month	% Change
	37,957	14.0% ▲
Excl GA	36,803	11.3% ▲
Domestic	22,659	7.2%
International	14,144	18.6%
Gen Aviation	1,154	424.5%
Cargo Flights*	1,679	-18.1%

Year over Year % Change in Total Flights (Excl GA) - 12 Months

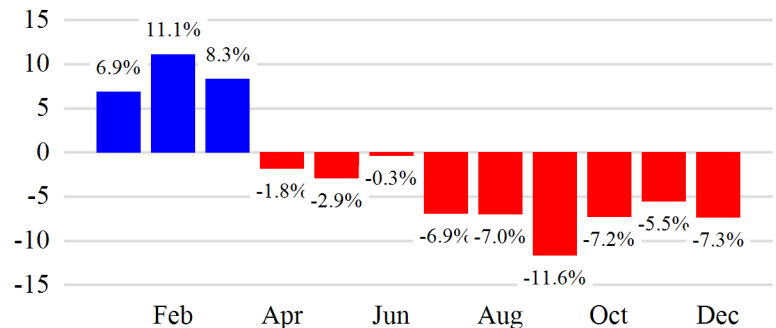


* Cargo flights included in above totals

Cargo (Short Tons)

	Curr Month	% Change
	130,850	-7.3% ▼
Domestic	40,314	-6.3%
International	90,535	-7.8%
Mail	5,107	-19.9%

Year over Year % Change in Cargo - 12 Months



Top 5 Declines in Revenue Passengers by Airline

Airline	Pax Decline	% Decline
AEROFLOT	(16,451)	-100.0%
KLM	(5,284)	-22.8%
EASTERN	(4,234)	-100.0%
FINNAIR	(3,648)	-22.5%
Avianca Costa Rica	(2,690)	-38.9%

Top 5 Increases in Revenue Passengers by Airline

Airline	Pax Increase	% Increase
DELTA	314,291	30.4%
JETBLUE AIRWAYS	271,448	23.7%
AMERICAN	36,768	5.9%
VIRGIN ATLANTIC	34,031	68.7%
BRITISH AIRWAYS	32,356	53.8%

12 Months Ending Passenger & Freight Statistics

Top 20 Airlines Ranking by Passengers & Freight: 12 Months Ending Dec 2022

Airline Name	Domestic	International	Total Pax	% of Tot	Airline Name	Short Tons	% of Tot
JETBLUE AIRWAYS	10,869,861	5,026,548	15,896,409	28.8%	AMERICAN	98,448	6.4%
DELTA	10,961,300	4,743,428	15,704,728	28.4%	DELTA	95,906	6.3%
AMERICAN	4,829,482	3,078,257	7,907,739	14.3%	FEDERAL EXPRESS	81,292	5.3%
ALASKA AIRLINES	1,265,963	-	1,265,963	2.3%	KALITTA AIR LLC	75,442	4.9%
AIR FRANCE	313	1,054,672	1,054,985	1.9%	ABX AIR INC	67,025	4.4%
BRITISH AIRWAYS	-	918,962	918,962	1.7%	ATLAS AIR	62,157	4.1%
VIRGIN ATLANTIC	-	820,849	820,849	1.5%	CARGOLUX AIRLINES	56,313	3.7%
EMIRATES AIRLINES	-	815,778	815,778	1.5%	KOREAN	55,598	3.6%
Avianca	-	653,706	653,706	1.2%	UNITED PARCEL	53,399	3.5%
TURKISH AIR	-	562,951	562,951	1.0%	AIR TRANSPORT INT'L.(BAX Inc.)	51,643	3.4%
AER LINGUS	-	536,037	536,037	1.0%	CHINA AIRLINES (CAL)	45,830	3.0%
IBERIA	-	454,199	454,199	0.8%	TURKISH AIR	39,567	2.6%
QATAR AIRWAYS	-	453,508	453,508	0.8%	EVA	38,502	2.5%
KLM	-	423,443	423,443	0.8%	VIRGIN ATLANTIC	37,207	2.4%
LUFTHANSA	-	407,197	407,197	0.7%	BRITISH AIRWAYS	36,549	2.4%
ITA (formerly ALITALIA)	-	358,520	358,520	0.6%	LUFTHANSA CARGO	33,655	2.2%
COPA AIRLINES	-	348,443	348,443	0.6%	AIR FRANCE	31,641	2.1%
AEROMEXICO	-	338,144	338,144	0.6%	EUROPEAN AIR TRANSPORT	26,982	1.8%
UNITED	333,364	-	333,364	0.6%	ASIANA	26,540	1.7%
SINGAPORE AIRLINES	-	325,257	325,257	0.6%	AIR CHINA (CARGO)	25,567	1.7%

Passengers & Freight by Market - 12 Months Ending

Market	Passengers	Freight (Short Tons)
TRANSATLANTIC	15,534,272	700,601
CANADA	206,178	2,087
CARIBBEAN + BERMUDA	5,237,595	7,485
CENTRAL AND SOUTH AMERICA	3,224,005	54,717
DOMESTIC	26,957,448	448,735
MEXICO	1,519,601	13,092
TRANSPACIFIC	1,116,587	302,015
PUERTO RICO	1,492,007	3,556

December 2022 Traffic Report

AVIATION DEPARTMENT (Data As Of 2/2/2023 3:31:05 PM)



Additional Data

Airline Schedules (ADI): Non-Stop Destinations

	Region	Flights (Daily)	Cities
Domestic	Domestic	686.3	63
	Puerto Rico	23.5	3
	Total	709.9	66
International	Canada	8.4	3
	Caribbean & Bermuda	116.2	24
	Central & South America	56.9	16
	Mexico	34.0	6
	Trans-Atlantic	191.7	46
	Trans-Pacific	22.5	10
	Unknown	0.5	1
	Total	430.2	106
	Total	1140.1	172

Airline Schedules (ADI): Carriers & Aircraft Type

	Aircraft Type	Flights (Daily)	Carriers
Domestic	Commuter	210.6	2
	General Aviation	2.0	1
	Narrow Body	465.1	4
	Unknown	2.0	1
	Wide Body	30.2	3
Total	709.9	11	
International	Commuter	4.5	1
	Narrow Body	208.1	17
	Wide Body	217.6	50
	Total	430.2	68
	Total	1140.1	79

Passenger Demographics (ACI ASQ Surveys - 2021)

Connect		Trip Type	
Local Origin/Destination	75.3%	Business	11.1%
Connecting	24.7%	Leisure	88.9%
Transport Mode		Annual Flights	
Bus/Shuttle	3.0%	1-2	66.4%
Other	17.2%	3-5	22.6%
Private/Company Car	38.3%	6-10	7.6%
Rail/Subway	9.8%	11-20	2.0%
Rental Car	4.1%	21+	1.4%
Taxi/Limo	27.6%		
Gender		Residency	
M	47.7%	United States	76.4%
F	52.3%	Other	23.6%

Ground Transportation

	Curr Month	% Change		Curr Month	% Change
<i>Paid Parked Cars</i>	161,454	-14.2	<i>Total Air Train Passengers</i>	1,652,791	32.0
<i>GTC Bookings</i>	0		<i>Paid Howard Beach Passengers</i>	155,389	55.3
<i>Airport Coach Passengers</i>	0		<i>Paid Jamaica Passengers</i>	471,953	24.4
<i>Taxis Dispatched</i>	182,855	28.6	<i>On-Airport (Unpaid) Passengers</i>	1,025,449	32.8