

# January 2023 Traffic Report

AVIATION DEPARTMENT (Data As Of 3/1/2023 8:44:16 AM)

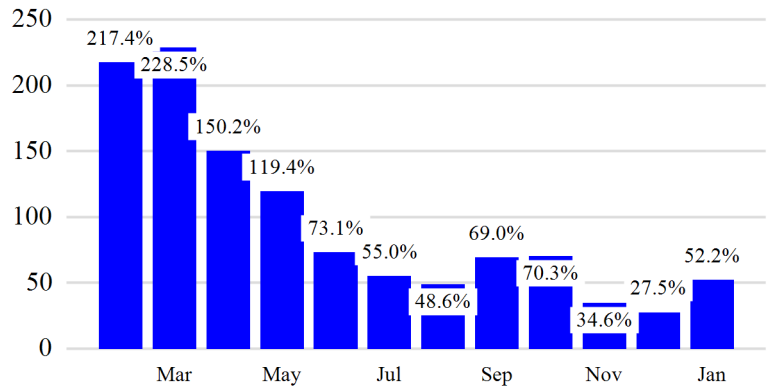
## Revenue Passengers

	Curr Month	% Change
	4,457,112	52.2% ▲
Domestic	2,161,510	37.7%
International	2,295,602	69.0%
Non-Revenue	138,193	45.1%

Load Factors	Curr Month	Avg Load Factor
Domestic	73.8%	76.1% Avg Load Factor
International	78.4%	

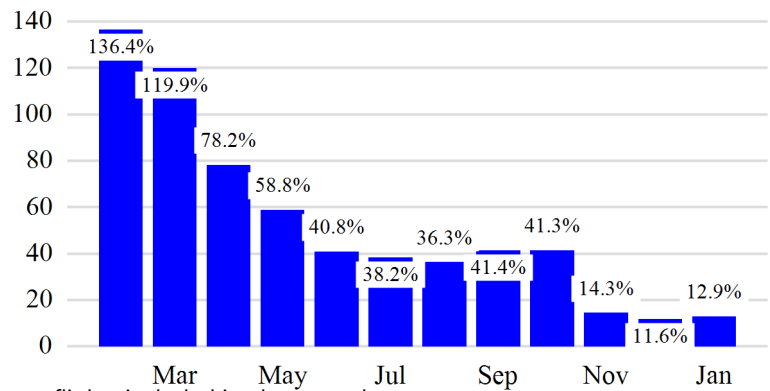
Year over Year % Change in Revenue Passengers - 12 Months



## Total Flights

	Curr Month	% Change
	37,776	15.3% ▲
<b>Excl GA</b>	36,650	12.9% ▲
Domestic	22,747	7.8%
International	13,903	22.3%
Gen Aviation	1,126	275.3%
Cargo Flights*	1,395	-8.8%

Year over Year % Change in Total Flights (Excl GA) - 12 Months

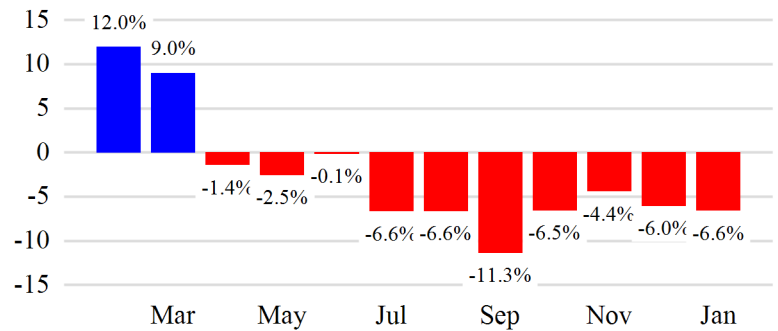


\* Cargo flights included in above totals

## Cargo (Short Tons)

	Curr Month	% Change
	109,443	-6.5% ▼
Domestic	30,454	-15.3%
International	78,989	-2.7%
Mail	3,872	-23.3%

Year over Year % Change in Cargo - 12 Months



Top 5 Declines in Revenue Passengers by Airline

Airline	Pax Decline	% Decline
AEROFLOT	(14,949)	-100.0%
EASTERN	(2,614)	-100.0%
Avianca El Salvador	(2,367)	-11.5%
AIR PORTUGAL(TAP)	(1,945)	-19.4%
QATAR AIRWAYS	(1,372)	-4.1%

Top 5 Increases in Revenue Passengers by Airline

Airline	Pax Increase	% Increase
DELTA	464,497	55.7%
JETBLUE AIRWAYS	410,351	46.2%
AMERICAN	133,461	29.4%
BRITISH AIRWAYS	38,380	109.6%
AIR FRANCE	34,102	91.5%

## 12 Months Ending Passenger & Freight Statistics

### Top 20 Airlines Ranking by Passengers & Freight: 12 Months Ending Jan 2023

Airline Name	Domestic	International	Total Pax	% of Tot	Airline Name	Short Tons	% of Tot
JETBLUE AIRWAYS	11,105,863	5,200,897	16,306,760	28.7%	AMERICAN	97,723	6.4%
DELTA	11,268,804	4,900,421	16,169,225	28.5%	DELTA	95,767	6.2%
AMERICAN	4,869,430	3,171,770	8,041,200	14.2%	FEDERAL EXPRESS	81,698	5.3%
ALASKA AIRLINES	1,293,132	-	1,293,132	2.3%	KALITTA AIR LLC	72,510	4.7%
AIR FRANCE	313	1,088,774	1,089,087	1.9%	ABX AIR INC	66,312	4.3%
BRITISH AIRWAYS	-	957,360	957,360	1.7%	ATLAS AIR	61,115	4.0%
VIRGIN ATLANTIC	-	849,411	849,411	1.5%	KOREAN	54,506	3.6%
EMIRATES AIRLINES	-	834,168	834,168	1.5%	CARGOLUX AIRLINES	54,003	3.5%
Avianca Costa Rica	-	668,454	668,454	1.2%	AIR TRANSPORT INT'L.(BAX Inc.)	53,071	3.5%
TURKISH AIR	-	570,435	570,435	1.0%	UNITED PARCEL	52,621	3.4%
AER LINGUS	-	560,286	560,286	1.0%	CHINA AIRLINES (CAL)	44,674	2.9%
IBERIA	-	472,326	472,326	0.8%	TURKISH AIR	40,176	2.6%
QATAR AIRWAYS	-	452,136	452,136	0.8%	VIRGIN ATLANTIC	38,157	2.5%
KLM	-	431,497	431,497	0.8%	BRITISH AIRWAYS	37,354	2.4%
LUFTHANSA	-	422,362	422,362	0.7%	LUFTHANSA CARGO	34,596	2.3%
ITA (formerly ALITALIA)	-	379,677	379,677	0.7%	EVA	33,648	2.2%
COPA AIRLINES	-	347,377	347,377	0.6%	AIR FRANCE	32,107	2.1%
AEROMEXICO	-	343,642	343,642	0.6%	CATHAY PACIFIC	28,904	1.9%
SINGAPORE AIRLINES	-	339,684	339,684	0.6%	ASIANA	27,701	1.8%
EL AL	-	331,862	331,862	0.6%	EUROPEAN AIR TRANSPORT	26,683	1.7%

### Passengers & Freight by Market - 12 Months Ending

Market	Passengers	Freight (Short Tons)
TRANSATLANTIC	16,056,037	709,983
CANADA	232,640	2,590
CARIBBEAN + BERMUDA	5,409,048	7,311
CENTRAL AND SOUTH AMERICA	3,258,530	54,461
DOMESTIC	27,506,408	443,287
MEXICO	1,584,391	13,357
TRANSPACIFIC	1,234,478	298,524
PUERTO RICO	1,534,500	3,509

## Additional Data

### Airline Schedules (ADI): Non-Stop Destinations

	Region	Flights (Daily)	Cities
Domestic	Domestic	683.7	64
	Puerto Rico	24.2	3
	<b>Total</b>	<b>707.9</b>	<b>67</b>
International	Canada	13.0	4
	Caribbean & Bermuda	111.8	24
	Central & South America	56.0	16
	Mexico	36.5	6
	Trans-Atlantic	179.3	46
	Trans-Pacific	21.9	10
	Unknown	0.5	1
	<b>Total</b>	<b>419.2</b>	<b>107</b>
	<b>Total</b>	<b>1127.1</b>	<b>174</b>

### Airline Schedules (ADI): Carriers & Aircraft Type

	Aircraft Type	Flights (Daily)	Carriers
Domestic	Commuter	212.1	2
	General Aviation	2.0	1
	Narrow Body	457.6	4
	Unknown	2.0	1
International	Wide Body	34.2	3
	<b>Total</b>	<b>707.9</b>	<b>11</b>
	Commuter	9.0	2
	Narrow Body	204.5	17
	Wide Body	205.6	50
<b>Total</b>	<b>419.2</b>	<b>69</b>	
<b>Total</b>	<b>Total</b>	<b>1127.1</b>	<b>80</b>

### Passenger Demographics (ACI ASQ Surveys - 2021)

Connect		Trip Type	
Local Origin/Destination	75.3%	Business	11.1%
Connecting	24.7%	Leisure	88.9%
Transport Mode		Annual Flights	
Bus/Shuttle	3.0%	1-2	66.4%
Other	17.2%	3-5	22.6%
Private/Company Car	38.3%	6-10	7.6%
Rail/Subway	9.8%	11-20	2.0%
Rental Car	4.1%	21+	1.4%
Taxi/Limo	27.6%		
Gender		Residency	
M	47.7%	United States	76.4%
F	52.3%	Other	23.6%

### Ground Transportation

	Curr Month	% Change		Curr Month	% Change
<i>Paid Parked Cars</i>	166,670	5.3	<i>Total Air Train Passengers</i>	1,971,681	107.6
<i>GTC Bookings</i>	0		<i>Paid Howard Beach Passengers</i>	114,824	83.5
<i>Airport Coach Passengers</i>	0		<i>Paid Jamaica Passengers</i>	401,110	60.2
<i>Taxis Dispatched</i>	159,489	43.7	<i>On-Airport (Unpaid) Passengers</i>	1,455,747	128.7